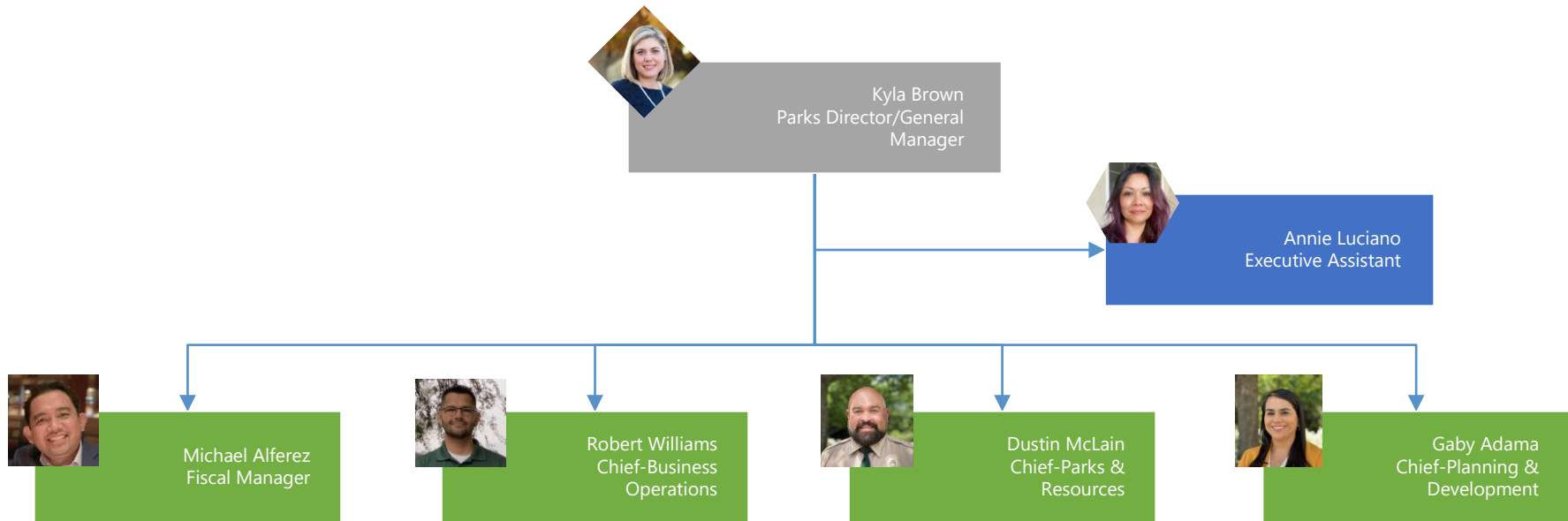
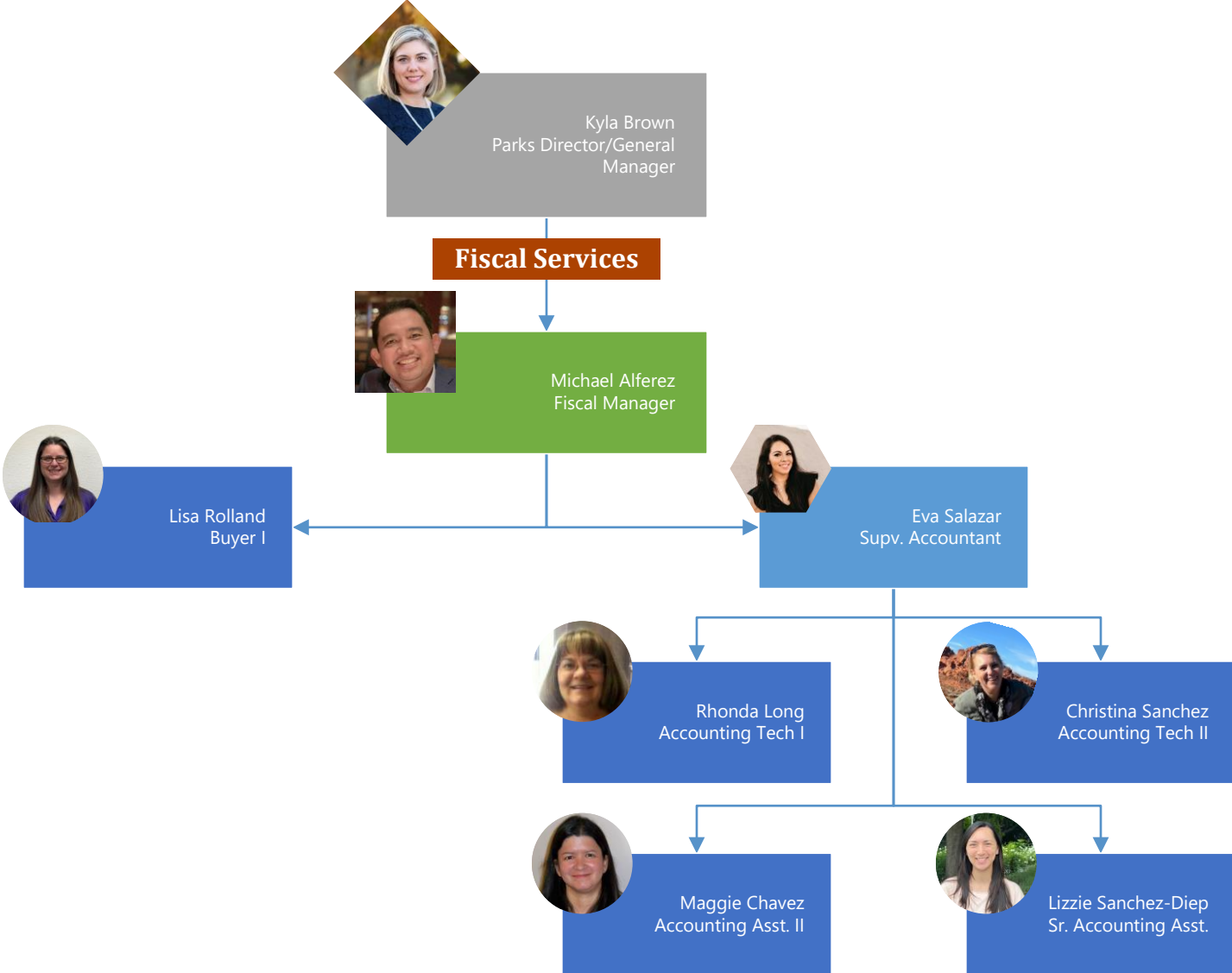


# RIVERSIDE COUNTY REGIONAL PARK & OPEN-SPACE DISTRICT EXECUTIVE STAFF



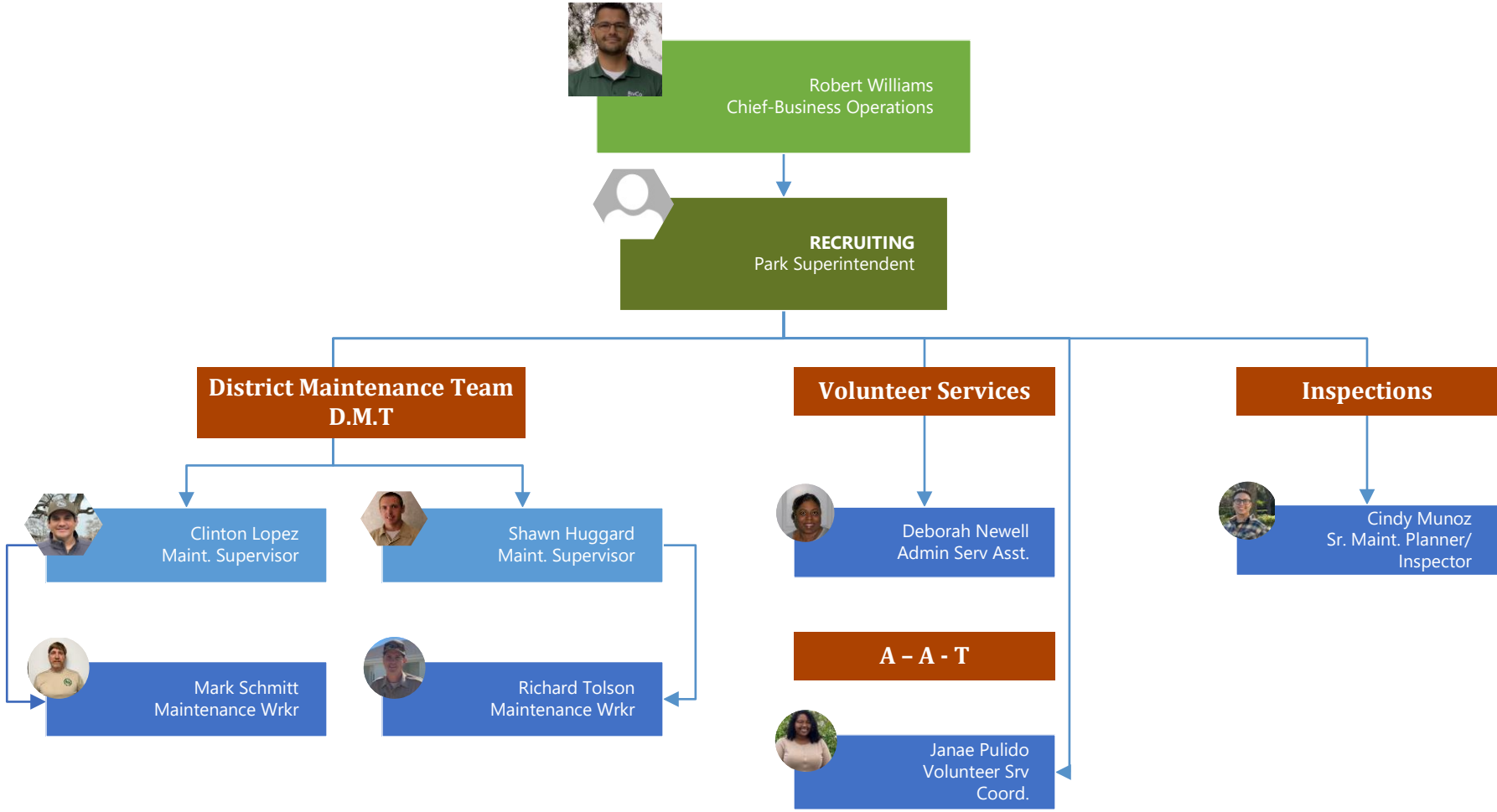
# RIVERSIDE COUNTY REGIONAL PARK & OPEN-SPACE DISTRICT

## Finance



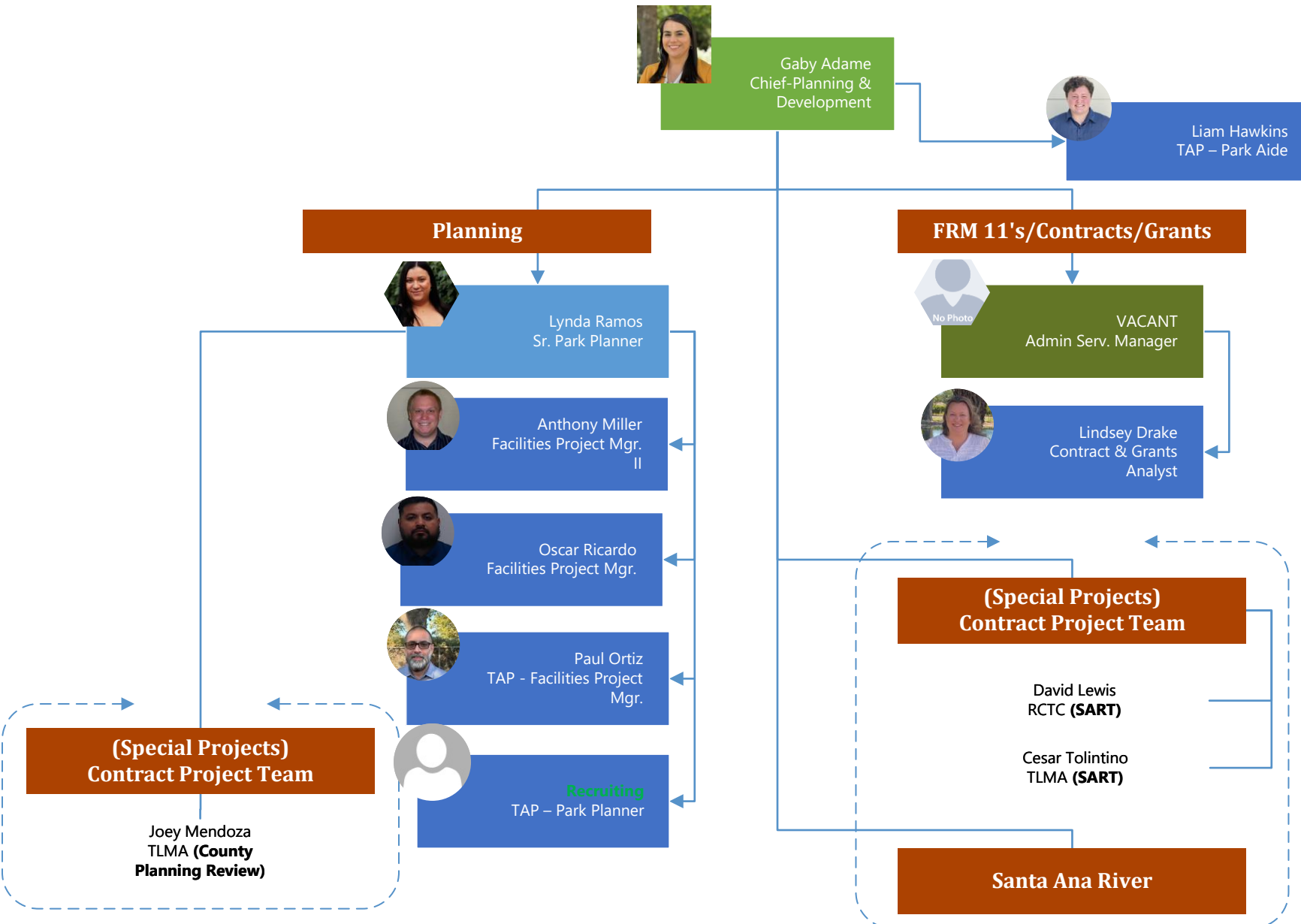
# RIVERSIDE COUNTY REGIONAL PARK & OPEN-SPACE DISTRICT

## Business Operations



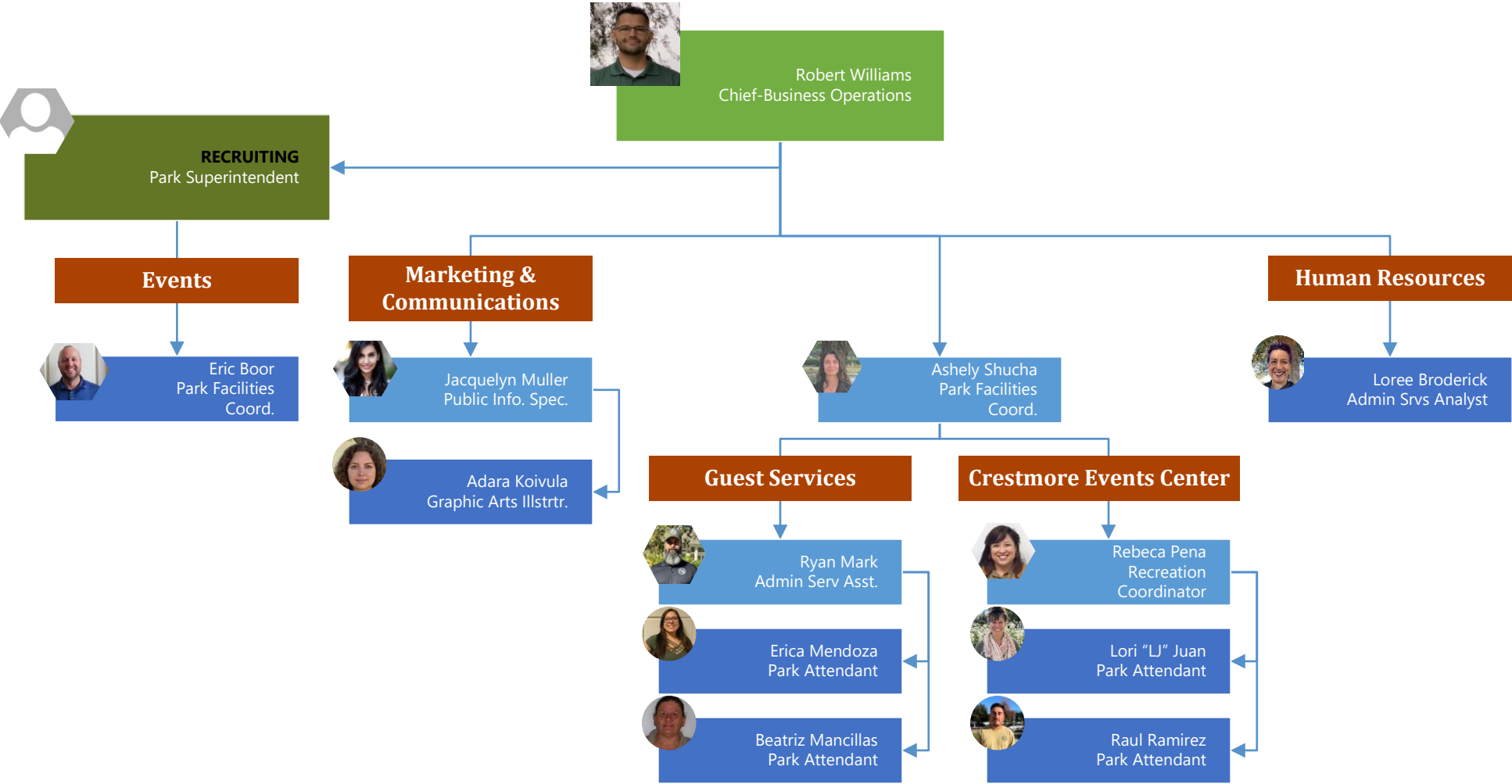
# RIVERSIDE COUNTY REGIONAL PARK & OPEN-SPACE DISTRICT

## Planning, Development & Contracts



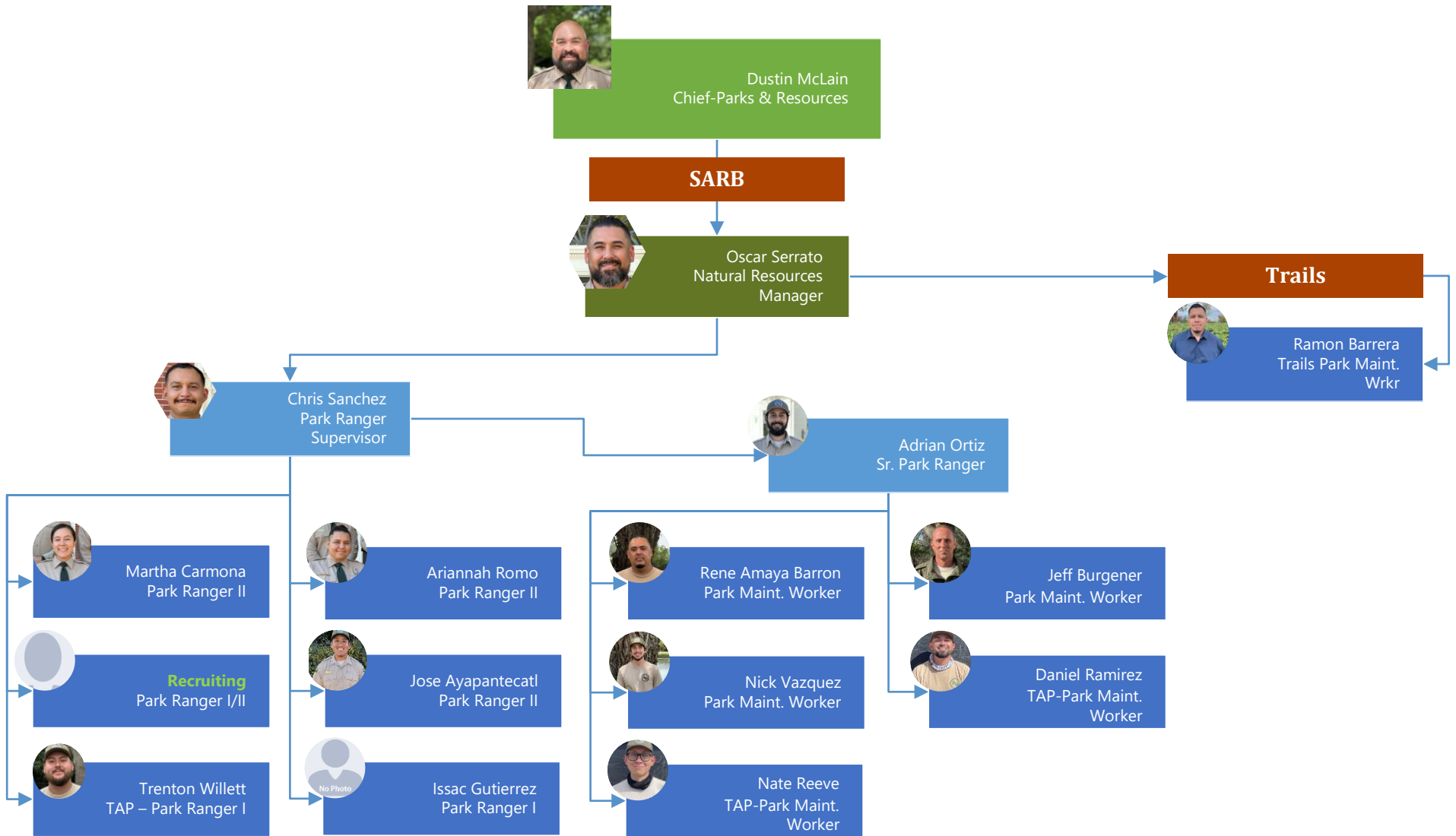
# RIVERSIDE COUNTY REGIONAL PARK & OPEN-SPACE DISTRICT

## Support Services & Recreation



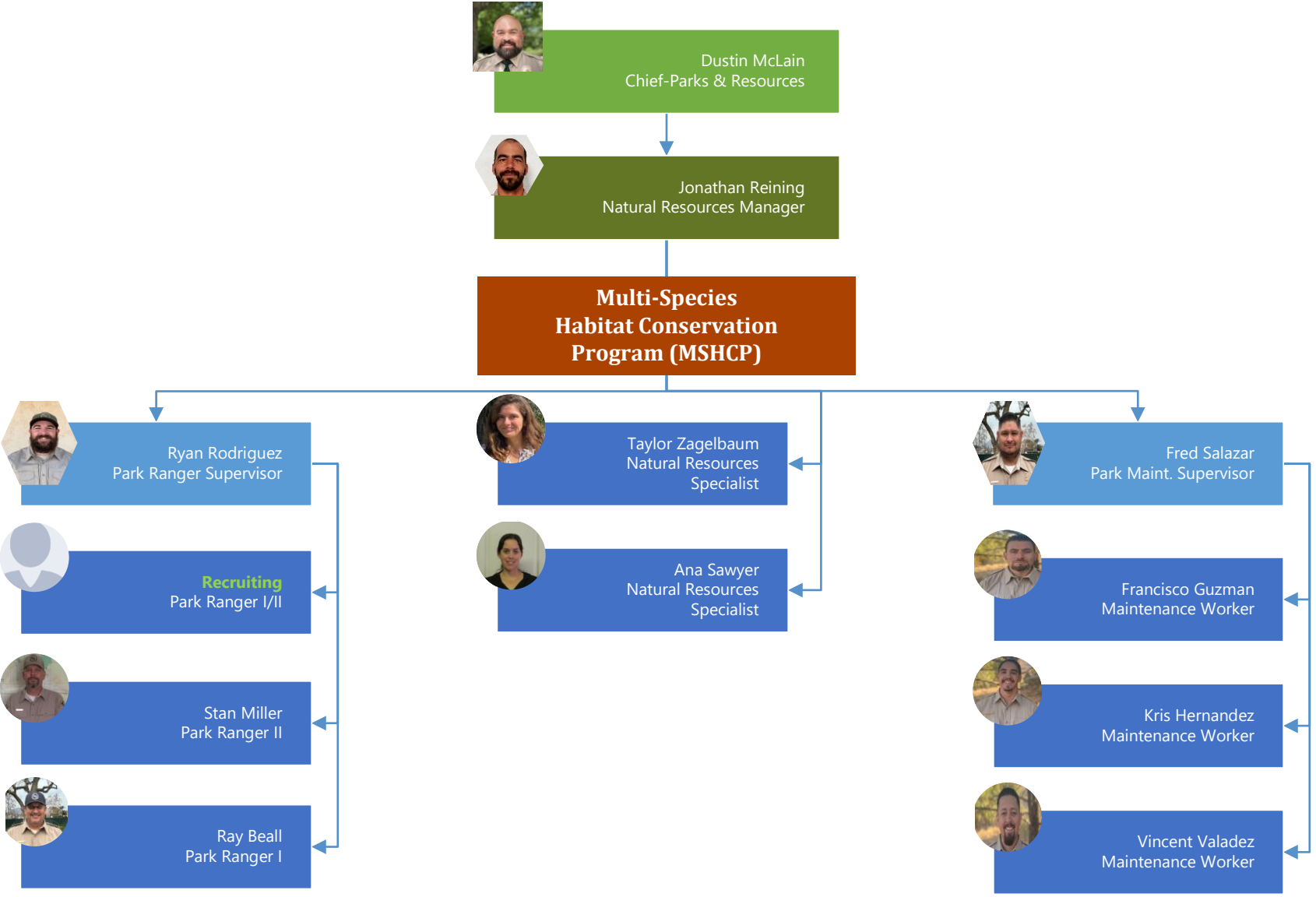
# RIVERSIDE COUNTY REGIONAL PARK & OPEN-SPACE DISTRICT

## Santa Ana River



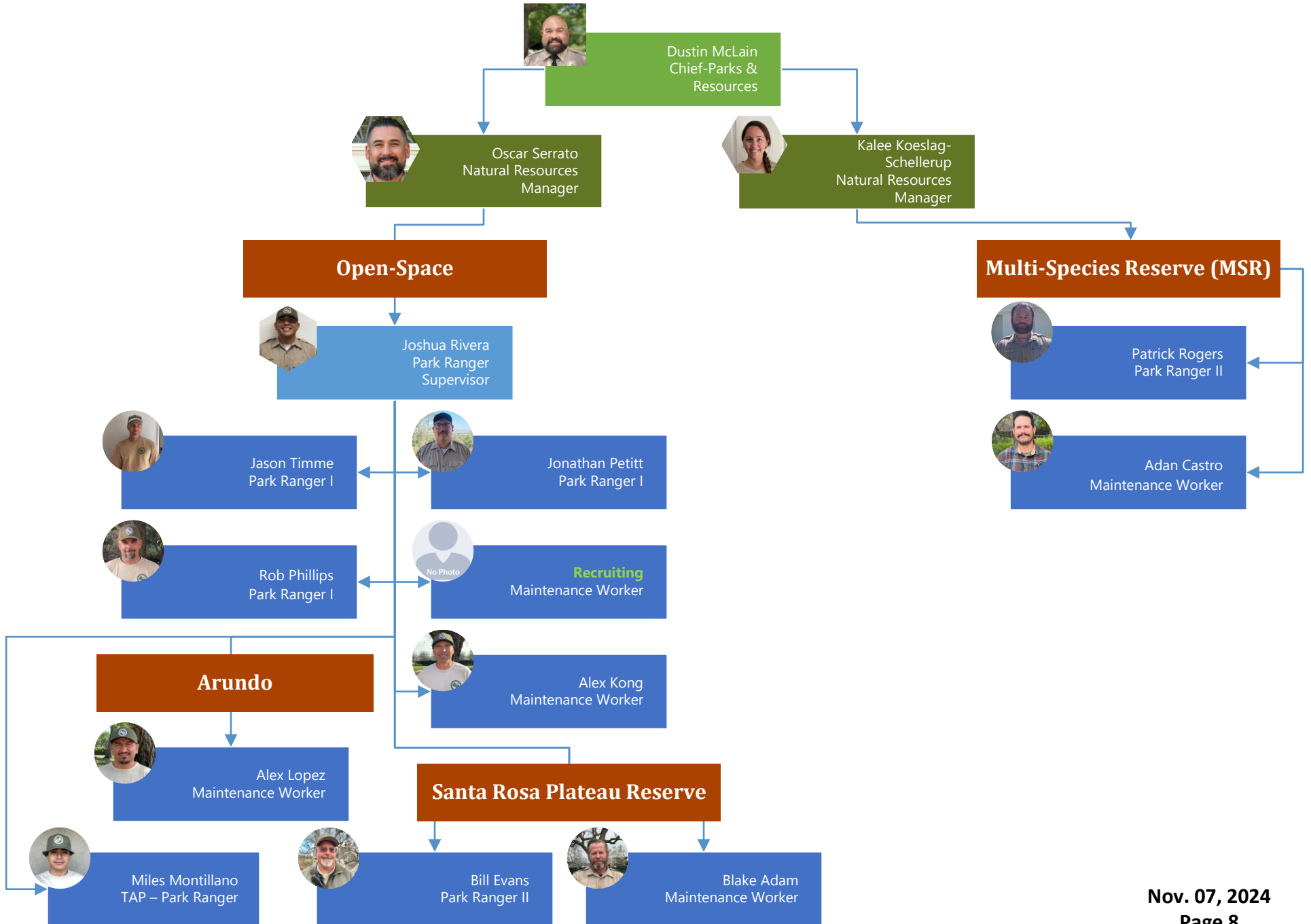
# RIVERSIDE COUNTY REGIONAL PARK & OPEN-SPACE DISTRICT

## Natural Resources - MSHCP



# RIVERSIDE COUNTY REGIONAL PARK & OPEN-SPACE DISTRICT

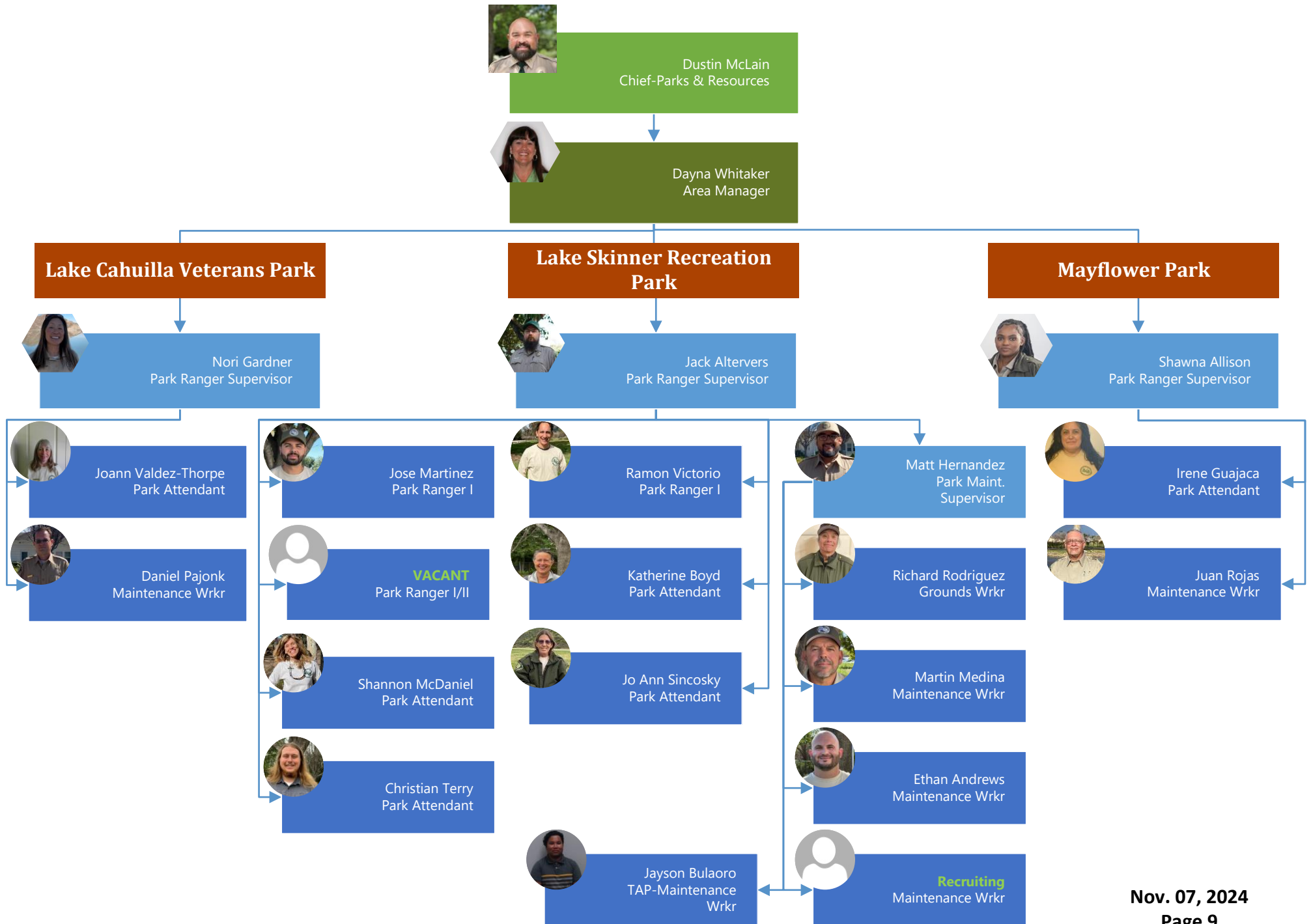
## Natural Resources – Open-Space/MSR





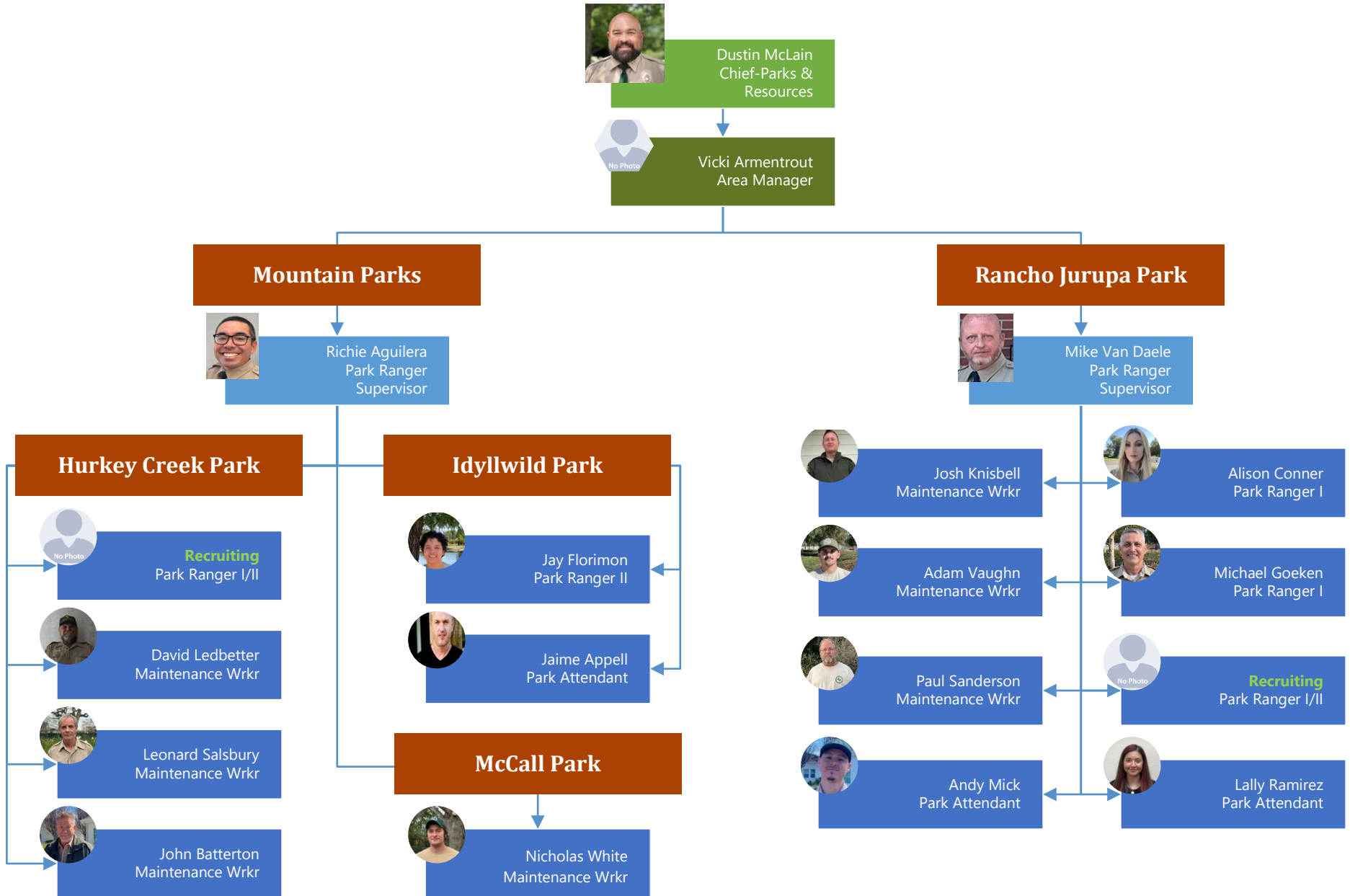
# RIVERSIDE COUNTY REGIONAL PARK & OPEN-SPACE DISTRICT

## Regional Parks - East



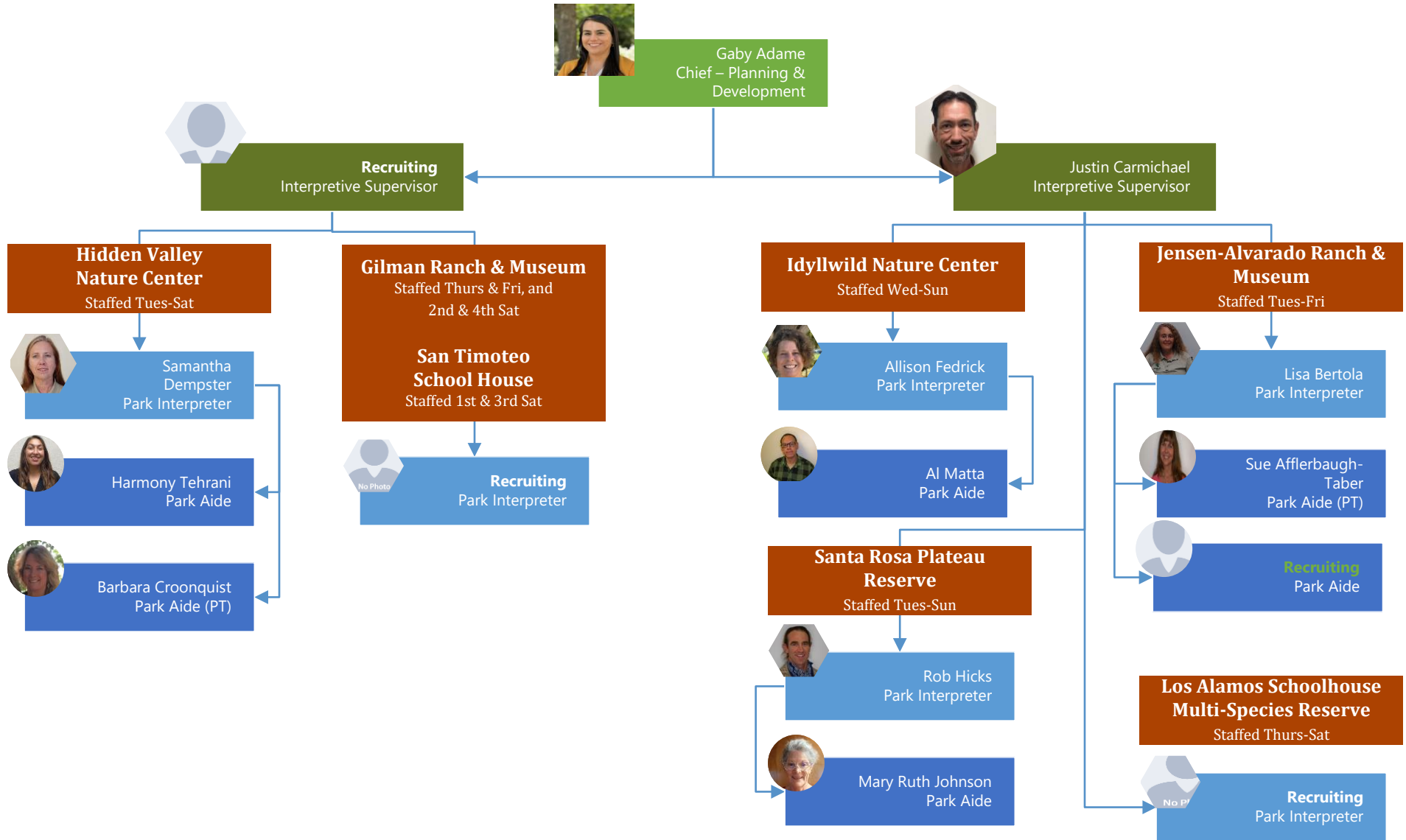
# RIVERSIDE COUNTY REGIONAL PARK & OPEN-SPACE DISTRICT

## Regional Parks - West



# RIVERSIDE COUNTY REGIONAL PARK & OPEN-SPACE DISTRICT

## Interpretive & Historic Resources



**KEY:**  
PT= Part time

Note: Nature Centers & Museums are closed Mondays and County Holidays